

DAFA RooFoil 230 MH™



Warranty.

DAFA offers a function and product warranty for 10 years on all products associated with DAFA AirVent System.

DAFA RooFoil 230 MH is a part of DAFA AirVent System and is a strong permeable fabric which can be used for both roof decking and wind barriers in a lightweight external wall structure.

Application

DAFA RooFoil 230 MH is used as a self-supporting rolled product for roof decking in both ventilated and non-ventilated roof structures with a pitch above 15°. DAFA RooFoil 230 MH is used as a wind barrier in a ventilated, lightweight external wall cladding. May only be used behind facades that are sealed against UV light.

Material

DAFA RooFoil 230 MH is a three-layer fabric, manufactured from a combination of PP weave and foil with high tearing strength. The fabric is permeable with an S_d value of 0.02 m.

The moisture-absorbing felt on the back can absorb and temporarily store as much as 720g of condensed water per m². It ensures efficient drying and contributes to fewer condensation and moisture problems in the cold season.

Supplied sizes

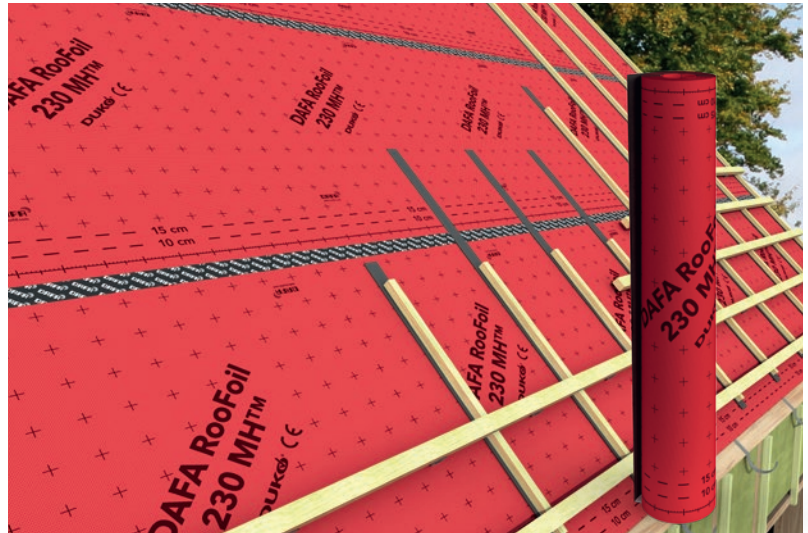
DAFA RooFoil 230 MH is supplied in rolls with a width of 1.5 m and 1.1 m and a length of 50 m.

Quality assurance

DAFA RooFoil 230 MH is CE-marked according to EU standard EN 13859-1.

Environment

DAFA RooFoil 230 MH is listed in the database for building products that can be used in Nordic Swan Ecolabelled buildings.



Dimensions

DAFA RooFoil 230 MH is easy to roll out, with a low weight of only 230 g/m². With 50 m on each roll, the number of joints can be reduced significantly.

Technical specifications

Name	Method	Unit	Results
Roll length	EN 1848-2	m	≥50
Roll width	EN 1848-2	m	1,1 and 1,5 +1,0 / -0,4%
Weight	EN 1849-2	g/m ²	230
Fire classification	EN 13501-1	Class	E
Tearing strength lengthways/crosswise	EN 12310-1	N	300/250 +/- 50
Elongation upon failure lengthways/crosswise	EN 12311-1	%	45/65
Tensile strength lengthways/crosswise	EN 12311-1	N / 50 mm	680/600 + / -20
S _d value	EN 1931 DIN EN ISO 12572	Sd m	≤0.02
Water absorption	EN 1928	Class	W1
Temperature resistance	EN 1109	°C	-40
Exposure time			12 weeks max.
DAFA item no. (1,1 m/ 1,5 m)			620026567 / 620026568
EAN no. (1,1 m/ 1,5 m)			5705636422213 / 5705636422220

LCA calculation

Product	Unit	GWP-total (A1-A3)
DAFA RooFoil 230 MH	kg CO ₂ eq./m ²	0,994

NEW



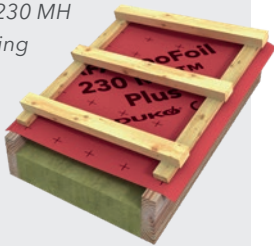
Download EPD for DAFA RooFoil 230 MH here: www.dafa-build.com/en/epd or scan the QR code

DAFA RooFoil 230 MH™

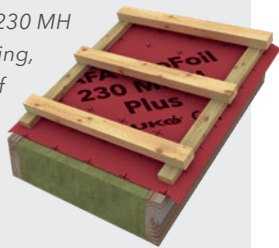
Roof decking structures

DAFA RooFoil 230 MH is permeable and therefore suitable for use as roof decking in both ventilated and non-ventilated roof structures.

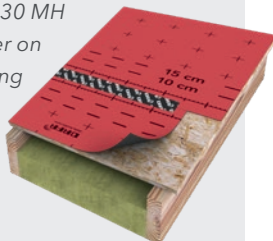
DAFA RooFoil 230 MH as self-supporting roof decking in ventilated structure.



DAFA RooFoil 230 MH as self-supporting, permeable roof decking in non-ventilated structure.



DAFA RooFoil 230 MH as a sealing layer on fixed roof decking in ventilated structure.

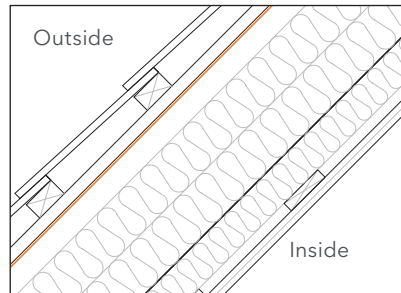


External wall structures

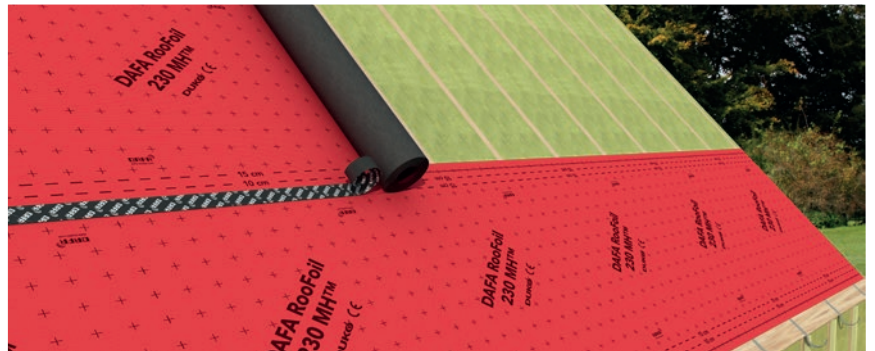
DAFA RooFoil 230 MH is a strong permeable fabric, which is suitable as a wind barrier in a lightweight, external wall structure with a ventilated cavity behind the rainshield on the facade.

Installation

DAFA RooFoil 230 MH can be installed in damp weather but must not be installed in freezing conditions. Maximum exposure time is 12 weeks. As DAFA RooFoil 230 MH is permeable, it can be insulated to the fabric. DAFA RooFoil 230 MH is rolled out with the product name facing outward and a minimum overlap of 150 mm. Joints are taped with DAFA UV tape for a complete seal. DAFA RooFoil 230 MH is not step-proof or fall-proof.


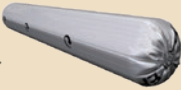

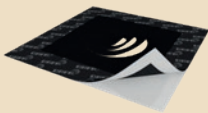


DAFA RooFoil 230 MH used as roof decking with ventilation between insulation and roof decking.



DAFA RooFoil 230 MH is installed with min. 150 mm overlay, and joints can be taped with DAFA UV tape.

Recommended accessories from DAFA

			
DAFA UV tape	DAFA universal outdoor adhesive	DAFA UV cable collar	DAFA UV pipe collar
<i>Ideal for overlap taping roofing and wind barriers.</i>	<i>Specially made adhesive with excellent adhesive properties.</i>	<i>Fully sealed conduits for cables or electrical boxes.</i>	<i>Fully sealed conduits for round or rectangular pipes.</i>

DAFA AirVent System comprises a large range of accessories for DAFA RooFoil 230 MH which are special products that make difficult details easier and ensure a fully sealed installation. Read more at www.dafa-build.com/en/airvent

