

# DAFA WindFoil 130™



DAFA WindFoil 130 is a part of DAFA AirVent System and is a strong, three-layer, permeable fabric which can be used as a wind barrier in a light external wall structure.

## Warranty.

DAFA offers a function and product warranty for 10 years on all products associated with DAFA AirVent System.

### Application

DAFA WindFoil 130 is used as a wind barrier in a ventilated, light external wall cladding. DAFA WindFoil 130 may only be used behind cladding that is sealed against UV light.

### The material

DAFA WindFoil 130 is made from a three-layer foil with high tearing strength and water-tight special coating with UV and IR stabilisers, which impede the aging process. DAFA WindFoil 130 is supplied with dotted lines on both sides marking the 150 mm overlap. The fabric is coated with a special anti-reflective coating and is permeable with an  $S_d$  value of approx. 0.02 m. The  $S_d$  value must be multiplied by a factor of approx. 5.7 to obtain the Z value.

### Supplied sizes

DAFA WindFoil 130 is supplied in rolls with a width of 3.05 m and a length of 25 m.

### Transport, delivery and storage

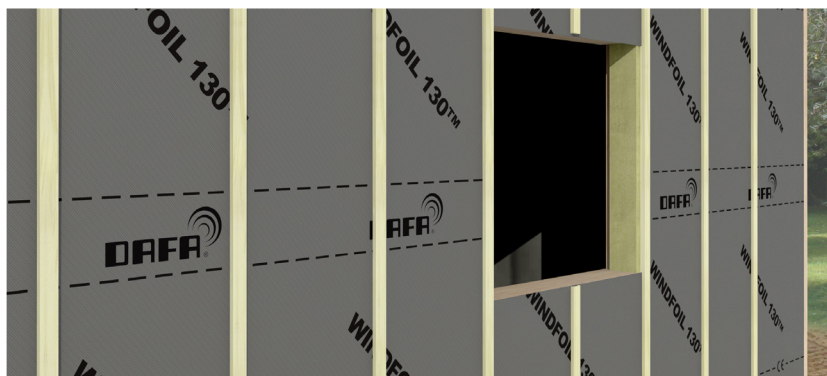
DAFA WindFoil 130 is supplied in rolls packed in PE Foil. DAFA WindFoil 130 is transported and stored horizontally on a Europallet, and must only be stacked to a height of two pallets. DAFA WindFoil 130 must be protected against the weather and direct sunlight.

### Quality assurance

DAFA WindFoil 130 is CE-marked according to EU standard EN 13859-2:2010 and EN 13859-1:2010

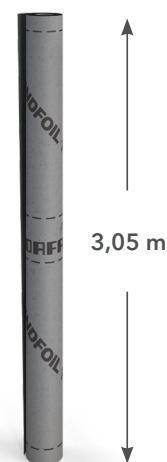
### Advantage

DAFA WindFoil 130 is listed in the database for building products that can be used in Nordic Swan Ecolabelled buildings.



### Dimensions

The DAFA WindFoil 130 is a strong wind barrier with a weight of 130 g/m<sup>2</sup>. With a width of 3.05 meters it is now possible to mount the wind barrier at full height without taping the overlay. This ensures a tight wind barrier combined with fast and time-saving mounting.



### Technical specifications

Roll dimensions	3,05 m x 25 m
Weight	Approx. 130 g/m <sup>2</sup> ± 6 %
Weight per roll	Approx. 9,9 kg.
Reaction to fire	Fire classification E
Tearing strength	225/160 N (± 20%)
Elongation upon failure	320/220 N/50mm (± 30%)
Exposure time	3 months without cover
$S_d$ value	0,02 m (-0,01/+0,03)
Item number	620029957
EAN number	5705636443584

# DAFA WindFoil 130™

## External wall structures

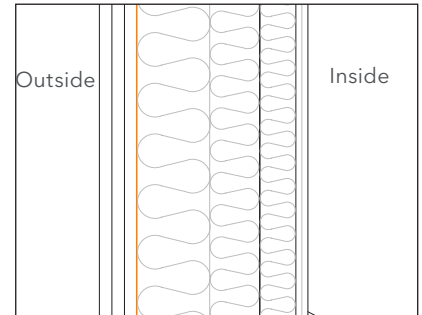
DAFA WindFoil 130 is suitable as a wind barrier in a light, external wall structure with a ventilated cavity behind the rainshield on the facade.

DAFA WindFoil 130 is particularly suitable for installing in constructions behind rainshields made of wood, metal, brick, etc. and can be installed both horizontally and vertically.

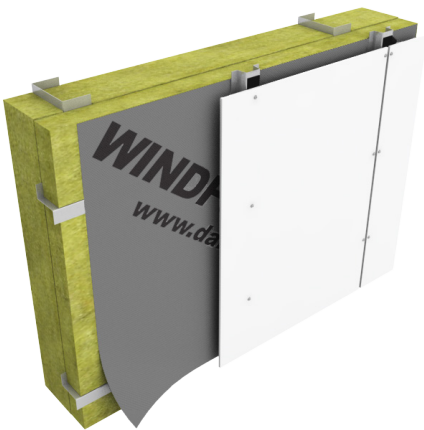
## Installation

DAFA WindFoil 130 rolls out quickly, retains its shape and the lengths are not deformed when rolling out. As DAFA WindFoil 130 is permeable, it can be insulated right out to the fabric.

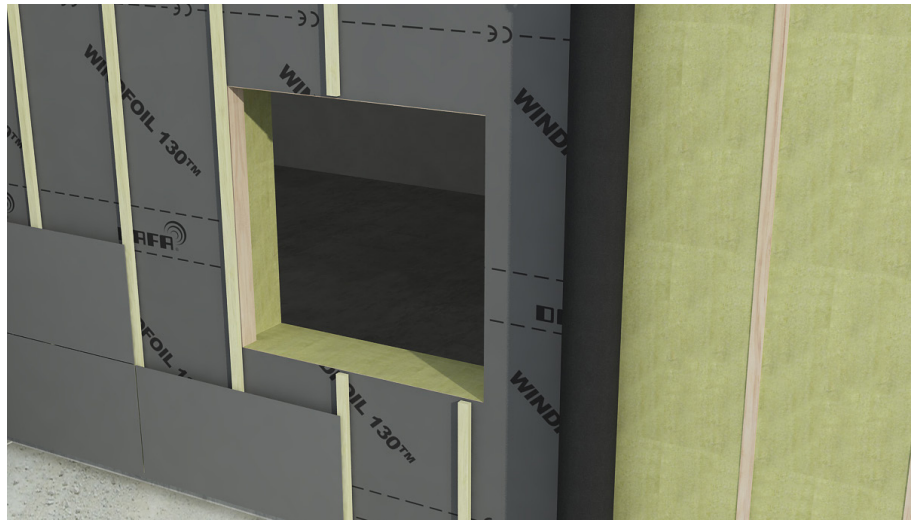
DAFA WindFoil 130 should be rolled out with the product name facing outward and with a minimum overlap of 150 mm. Joints are taped with DAFA UV tape for a full seal. DAFA WindFoil 130 must be masked with facade cladding as quickly as possible and within a maximum of four weeks from installation.



DAFA WindFoil 130 is used as a wind barrier with a ventilated cavity behind the rainshield.



DAFA WindFoil 130 as a wind barrier in ventilated external wall cladding.



DAFA WindFoil 130 is installed as a wind barrier with a minimum overlap of 150 mm and free joints are taped using DAFA UV tape.

## Accessories for DAFA WindFoil 130™



DAFA UV tape  
Adhesive tape with maximum adhesion.



DAFA Roof decking adhesive  
Permanent elastic special rubber for external use.



DAFA UV cable collar  
Fully sealed conduits for cables or electrical boxes.



DAFA UV pipe collar  
Fully sealed conduits for round or rectangular pipes.

DAFA AirVent System comprises a range of accessories for DAFA WindFoil 130 which are special products that make difficult details easier and ensure a fully sealed installation.

