

DAFA SprayBarrier™

Installation instructions

Before you get started—tips and tricks

- Get the compressor ready. Capacity: min. 6 bar at 300 l/min
- The gun must be cleaned using warm water before the sealant residue cures.
- Lubricate the inside of the gun tube using WD40 or an equivalent lubricant after about every tenth use.
- Breathing protection is not necessary if there is good ventilation. In attics and similar environments with little or no ventilation, a breathing mask (FFP2) must be used.
- Always wear protective gloves and glasses
- Trim the vapor barrier to size before you start spraying
- On absorbent surfaces, it is recommended that an extra thick layer (more than 1.3 mm) be applied

Layer thickness

- A layer about 1.3 mm thick (when wet) must be applied to obtain a Z-value of 100.
- Use a thickness gauge to ensure the correct thickness.
- Upon curing, DAFA SprayBarrier shrinks about 50%.
- A 600 ml bag contains enough to cover a 3-meter strip



Surfaces and adjacent materials

- The surface must be cleaned using a brush or vacuum cleaner
- Adheres to cable and pipe penetrations, metal, aerated concrete, plaster, untreated/painted wood and wood-based sheet materials
- Adheres to PVC, but it is recommended to prime the area before application using DAFA Universal Primer
- No or poor adhesion on PE foils, silicone, butyl rubber, neoprene, EPDM or surfaces containing bitumen or tar.
- Very strong adhesion on DAFA ExFoil vapor barrier. Always remember to place adhesive on the back side!!

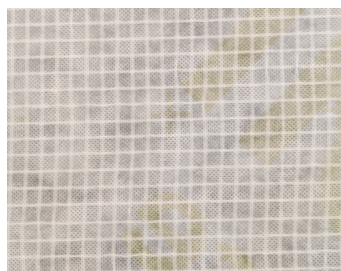
Covering and cleaning

- Cover elements that are not to be sprayed
- Clean off using warm water before curing if necessary

Can you tell me which side is the front and which side is the back of the DAFA ExFoil vapor barrier?



The front features a printed text and has a subtle gloss finish.



This is the back side, which does not have a printed text. The back side has a non-woven surface.

The gun



Screw the small caulk nozzle tightly in place



Insert the long caulk nozzle into the small caulk nozzle.



Insert the 600 ml bag of DAFA SprayBarrier into the gun tube and cut the end off using side cutters, just below the metal staple.



Screw the entire top (with the 2 caulk nozzles) into place. Must be thoroughly tightened.



The compressed air valve should be fully open when spraying. Close slightly if necessary as needed. Adjust to a suitable level.



When the bag is empty, unscrew the top and remove the long caulk nozzle.



Use compressed air to eject the bag.



The bottom plug is attached with a wire or chain. Reinsert this before placing a new bag in the tube.

The gun—settings



Spray mode.



Caulking mode.



Vapor barrier solution around beams.



Spray a 10 cm wide first layer lengthwise with the nozzle about 20-25 cm from the surface.



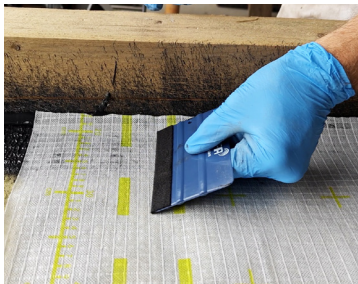
Spray layer 2 in a zig-zag pattern. Spray very close to the edge (but not up the edge)



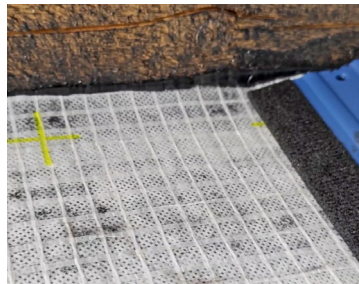
Using caulking mode, run a bead along the edge. Make sure there is enough sealant for the vapor barrier to be pressed into it.



Place the trimmed vapor barrier on top and press it firmly into place. Remember to place the back of the vapor barrier facing downwards.



Use a smoothing tool/squeegee as needed.



Ensure that the bead protrudes slightly above the vapor barrier for an airtight result.

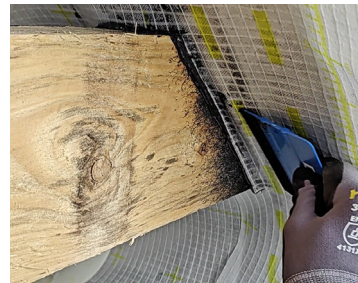
For collar beams/rafter shoes and external roof renovation tasks



Spray a 10 cm wide strip at least 1.3 mm thick around the collar beam/rafter shoe with the nozzle about 20-25 cm from the surface.



In caulking mode, place a bead around the collar beam/rafter shoe. Make sure there is enough sealant for the vapor barrier to be pressed into it.

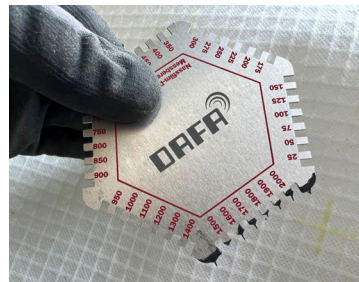


Press the vapor barrier into the sealant. It is good to use a smoothing tool.

Check the layer thickness



You can use a thickness gauge to ensure the correct layer thickness.



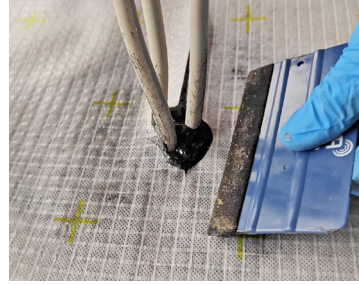
For cable penetrations



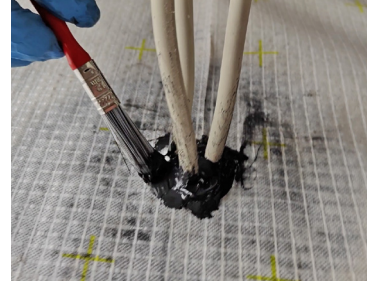
Spray a 10 cm wide strip at least 1.3 mm thick around the cables with the nozzle about 20-25 cm from the surface.



In caulking mode, place a bead around the cables. Make sure there is enough sealant for the vapor barrier to be pressed into it.



Press the vapor barrier into the sealant. It is good to use a smoothing tool.

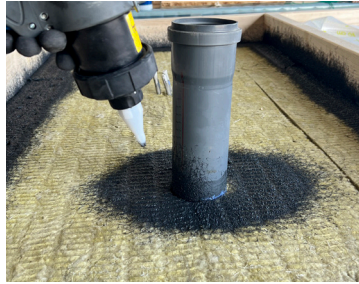


Use a brush to spread the DAFA SprayBarrier around the cables.

For pipe penetrations (PVC)



Apply primer to the pipe before spraying.



Spray a 10 cm wide strip at least 1.3 mm thick around the pipe with the nozzle about 20-25 cm from the surface.



In caulking mode, place a bead around the pipe. Make sure the bead is thick enough for the vapor barrier to be pressed into it.



Press the vapor barrier into the sealant. It is good to use a smoothing tool.

Also adheres to sealant foam and joint sealing tape



For large cracks/joints more than 2 mm wide, sealant foam or joint sealing tape must be used.



DAFA SprayBarrier adheres well to sealant foam and joint sealing tape.